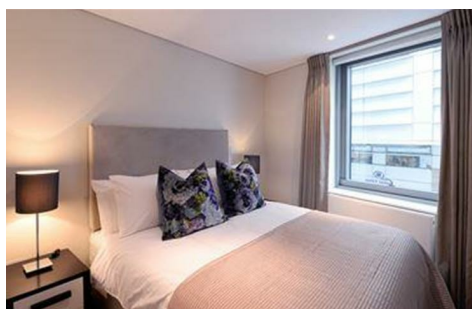
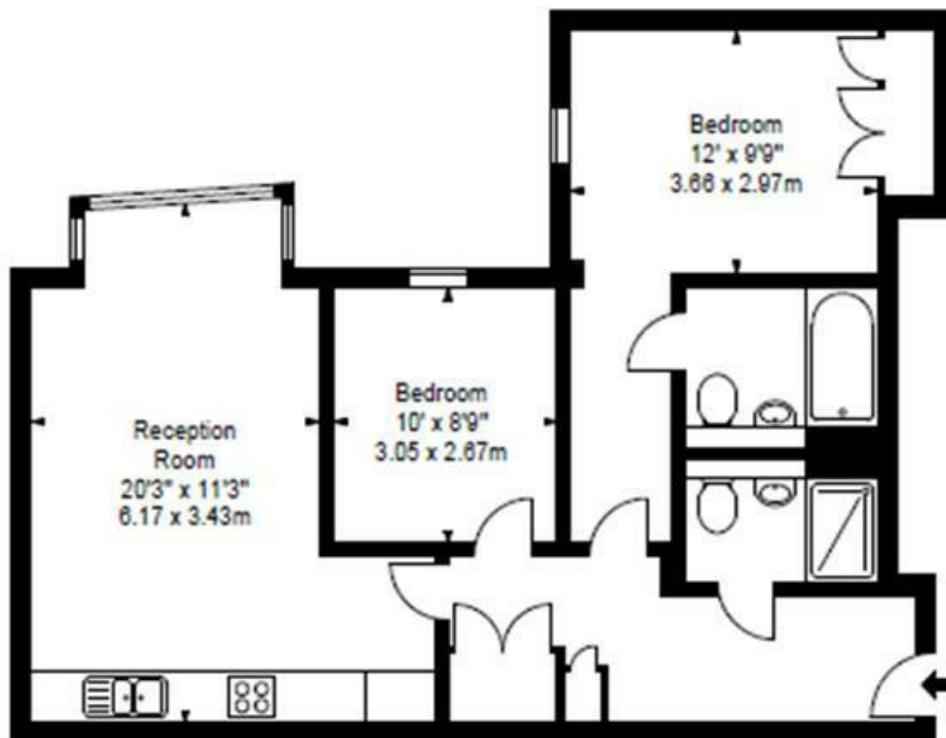


Merchant Square, W2 1AN

£1,395 Per Week



Available NOW! This fabulous 2nd floor, 3 double bedroom/ 2 bathroom apartment laid out over 943 sq. ft. furnished or unfurnished. Boasting, lift, 24 hour concierge, parking, shops video entry system, secure underground parking by separate negotiation, round the clock security and superb views across the London skyline. This spacious and bright apartment comprises a beautiful reception room with a new and modern, fully fitted, open plan kitchen, three spacious bedrooms and two bathrooms. Offering easy access to superb transport links such as Paddington Train Station (Bakerloo, Hammersmith & City, Circle, District lines and Heathrow express) Edgware Road (Circle, District and Bakerloo lines). Tenant fees may apply, details available on request.



Energy Efficiency Rating		
	Current	Potential
Very energy efficient - lower running costs		
(92 plus) A		
(81-91) B		
(69-80) C		
(55-68) D		
(39-54) E		
(21-38) F		
(1-20) G		
Not energy efficient - higher running costs		
England & Wales		
EU Directive 2002/91/EC		

Environmental Impact (CO ₂) Rating		
	Current	Potential
Very environmentally friendly - lower CO ₂ emissions		
(92 plus) A		
(81-91) B		
(69-80) C		
(55-68) D		
(39-54) E		
(21-38) F		
(1-20) G		
Not environmentally friendly - higher CO ₂ emissions		
England & Wales		
EU Directive 2002/91/EC		